



I-11 & Intermountain West Corridor Study

Northern Nevada and Beyond Connectivity Segment


Level 1 Evaluation Recommendations



In partnership with




Public Online Feedback, February 2014



Presentation Format and Feedback Opportunity


- This presentation provides an overview of the latest analysis completed for the Northern Nevada and Beyond Connectivity Segment.
- After viewing this presentation you can provide feedback using an online questionnaire designed for this segment.
- A presentation providing a thorough overview of the I-11 and Intermountain West Corridor Study is available.
- The online questionnaire will be available through February 28, 2014.

2





Presentation Outline

- Alternatives and the evaluation process
- Alternatives included in Level 1 screening
- Level 1 Recommendations
- How you can provide feedback



3



Alternatives and the Evaluation Process

I-11 Intermountain West Corridor Study

Universe of Alternatives

- Future Connectivity Segments: broad arrows that could include various existing and/or new corridors.
- Congressionally Designated Segments: generalized corridor alternatives.

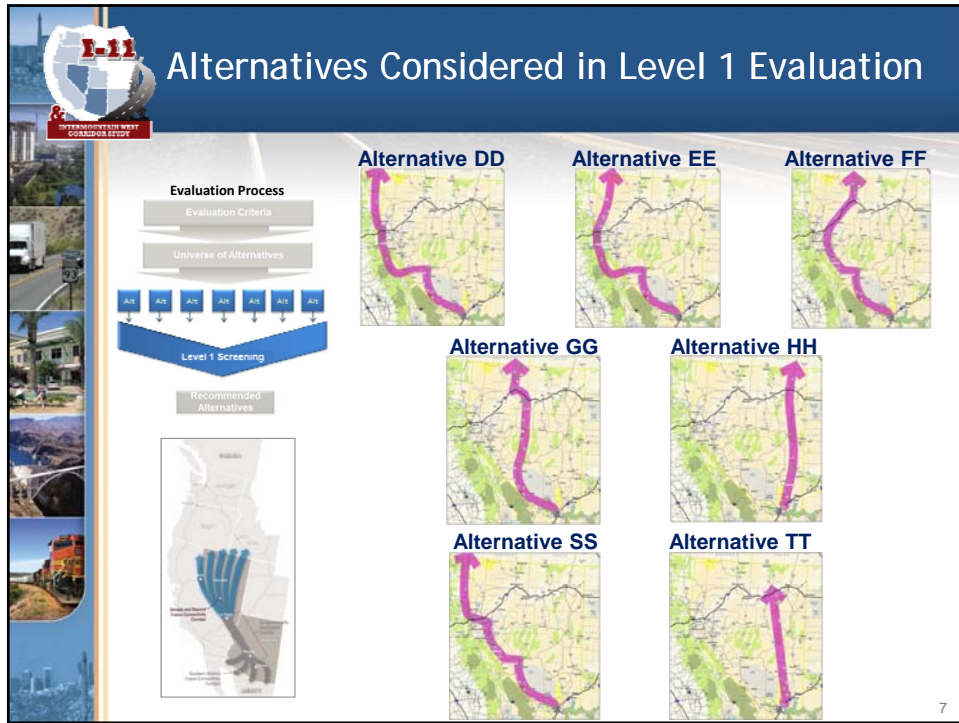
5

I-11 Intermountain West Corridor Study

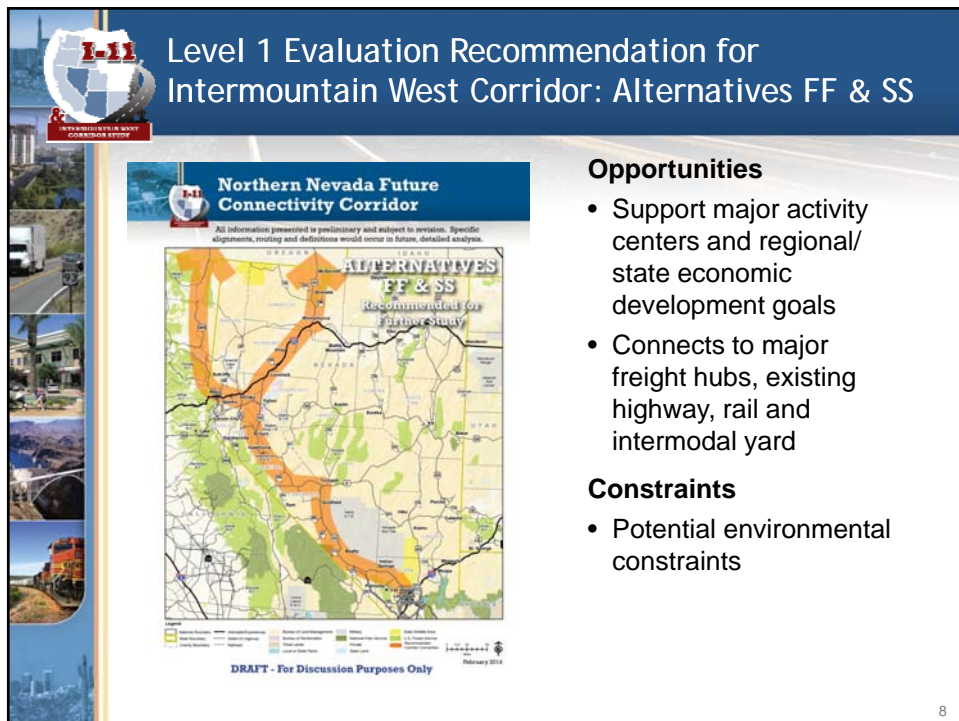
Evaluation Process


- “Alternative” is a corridor containing one or more modes (e.g., highway, rail)
 - Alternatives could consist of a new or existing transportation facility, or a combination of both
- Alternatives were evaluated using criteria that was measured qualitatively

6




7





Corridors of Statewide Importance: Alternatives HH and TT

I-11 Alignment Alternatives - HH and TT
Northern Nevada Future Connectivity Segment



Opportunities



- Consistent with statewide highway and rail plans
- Can accommodate multiple modes in a shared alignment
- Support regional and statewide economic development goals

Constraints


- Do not efficiently connect the major activity and economic centers in the Intermountain West

ALL INFORMATION IS PRELIMINARY / SUBJECT TO REVISION

9




How to Provide Feedback



How to Provide Feedback

- Complete online questionnaire regarding this Corridor segment.
- Review other Corridor segment analysis and complete corresponding questionnaires.
- The questionnaires will be available online through February 28, 2014.
- Comments are always welcome throughout the study.



11



Project Contacts:



<p>Sondra Rosenberg, PTP Nevada Department of Transportation 1263 South Stewart Street Carson City, NV 89712 srosenberg@dot.state.nv.us (775) 888-7241</p>	<p>Michael Kies, PE Arizona Department of Transportation 206 S. 17th Avenue Phoenix, AZ 85007 mkies@azdot.gov (602) 712-8140</p>
---	---