



I-11 & Intermountain West Corridor Study


## Study Overview



In partnership with




Public Online Feedback, February 2014



## Presentation Format and Feedback Opportunity


- This presentation provides an overview of the I-11 and Intermountain West Corridor Study.
- After viewing this presentation, participants can learn more about the latest analysis completed for the Corridor by reviewing segment-specific presentation(s) and providing feedback using an online questionnaire.
- The online questionnaires will be available through February 28, 2014.

2



## Presentation Outline

- Project overview and background
- Evaluation process
- Universe of alternative corridors considered
- How you can learn more about segment-specific analysis
- How you can provide feedback





3



## Project Overview

## I-11 Background

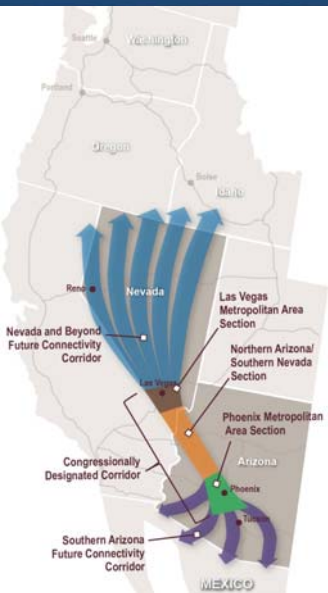
- Federal transportation authorizations identified high priority corridors
- CANAMEX Corridor designated (1995)
- Corridor advanced through:
  - MAG Hassayampa and Hidden Valley Framework Studies (2006 – 2009)
  - Building a Quality Arizona (bqAZ, 2010)
  - NDOT/RTCSNV Boulder City Bypass (2005 and ongoing)
- CANAMEX Corridor along US 93 between Phoenix and Las Vegas designated as future “I-11” in MAP-21 (2012)
- Arizona and Nevada DOTs signed an interagency agreement and begin a joint planning study (2012+)



5

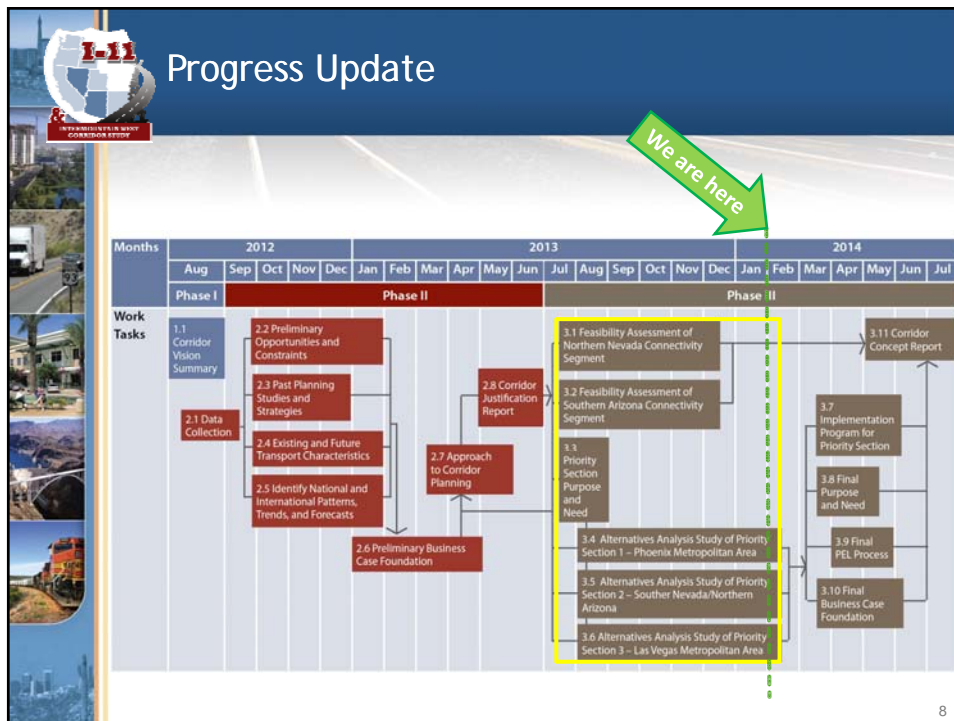
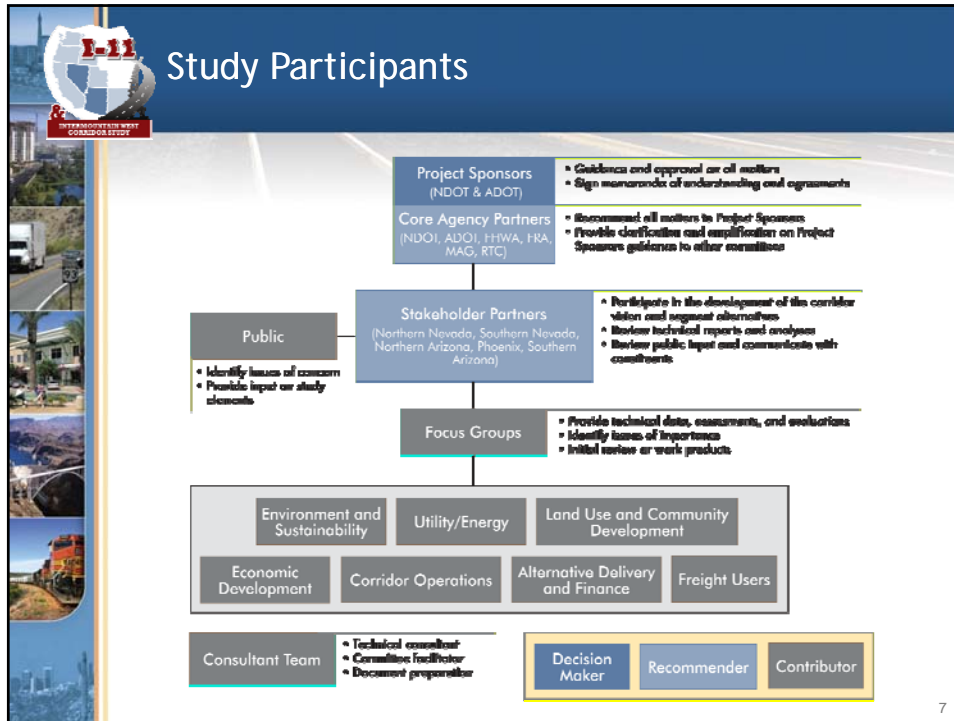
## I-11 What Does this Study Entail?

- Two levels of investigation:
  - Detailed corridor planning between Las Vegas and Phoenix
  - High-level visioning from Las Vegas to Canada, and from Phoenix to Mexico
- Multimodal consideration:
  - Interstate/highway, freight rail, passenger rail, and public transportation
  - Power, telecommunication, etc.



6

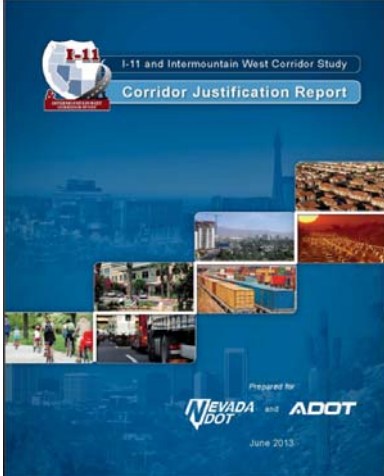
# I-11 and Intermountain West Corridor Study: February 2014 Online Feedback



## I-11 Study Deliverables

- ✓ Corridor Vision Summary
- ✓ Corridor Justification Report
- ✓ Existing Natural and Built Environment
- ✓ Level 1 Evaluation Results Summary
- ✓ **DRAFT** Level 2 Preliminary Evaluation Results Summary

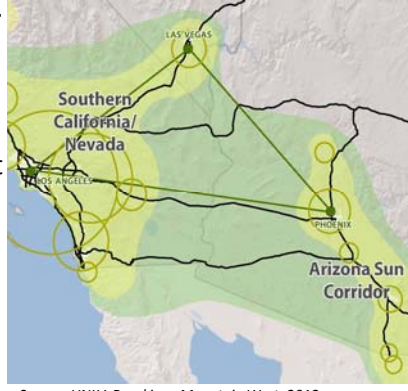
All documents available on website



9

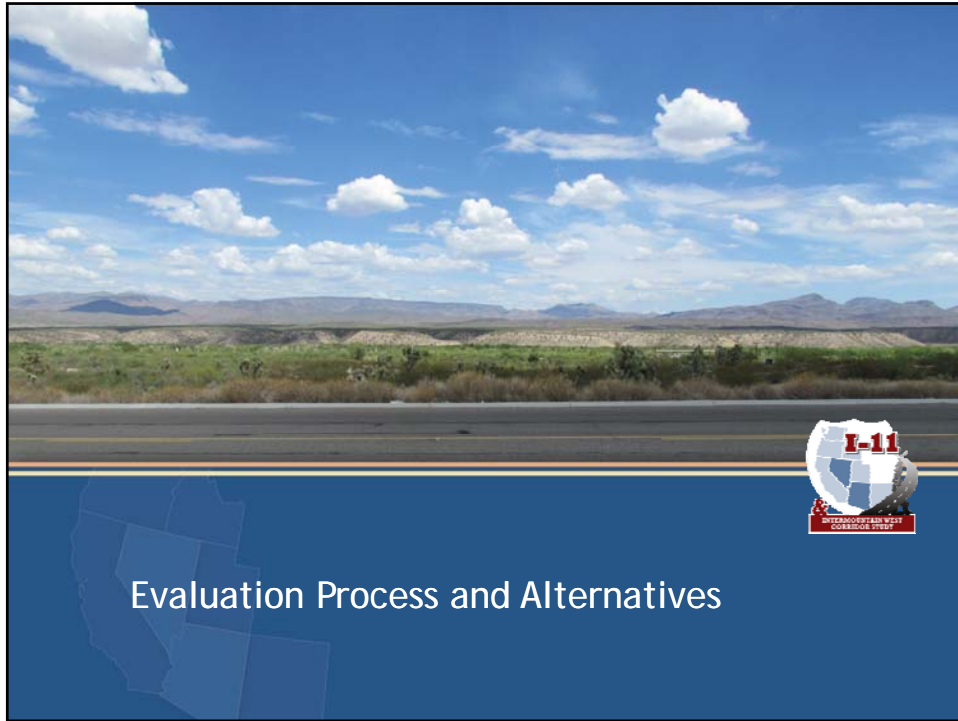
## I-11 Key Justifications Identified

- Integrate the economies of the Southwest Triangle megaregion.
- Capitalize on Mexico's growing role in North American manufacturing/trade.
- Support economic development initiatives of Arizona and Nevada.
- Prevent congestion from crippling economic competitiveness.
- Comply with enabling federal legislation.



Source: UNLV, Brookings Mountain West, 2012

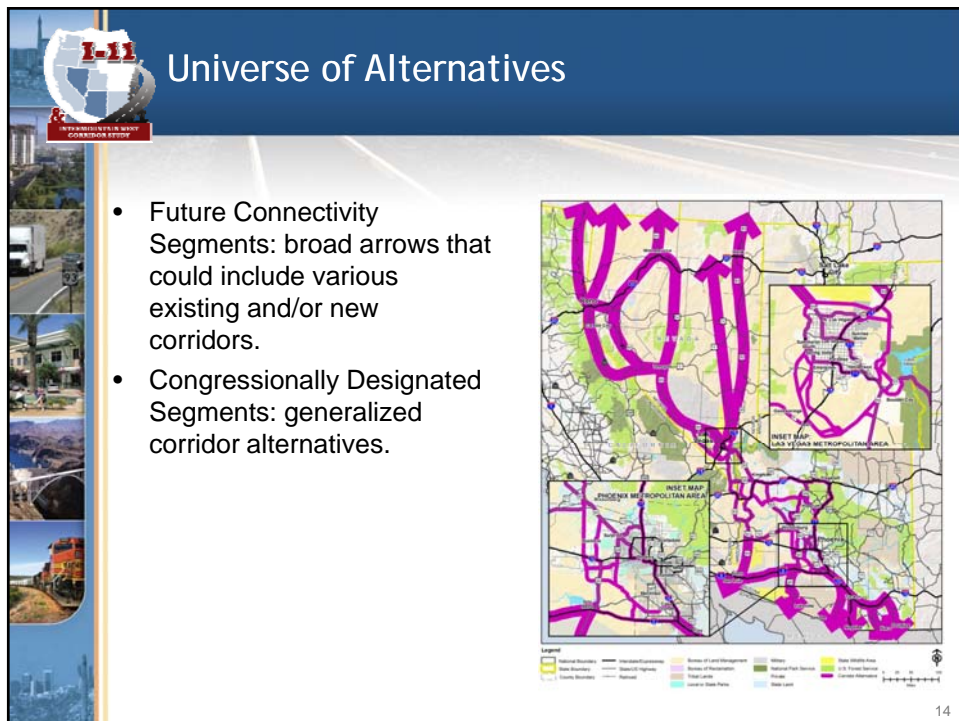
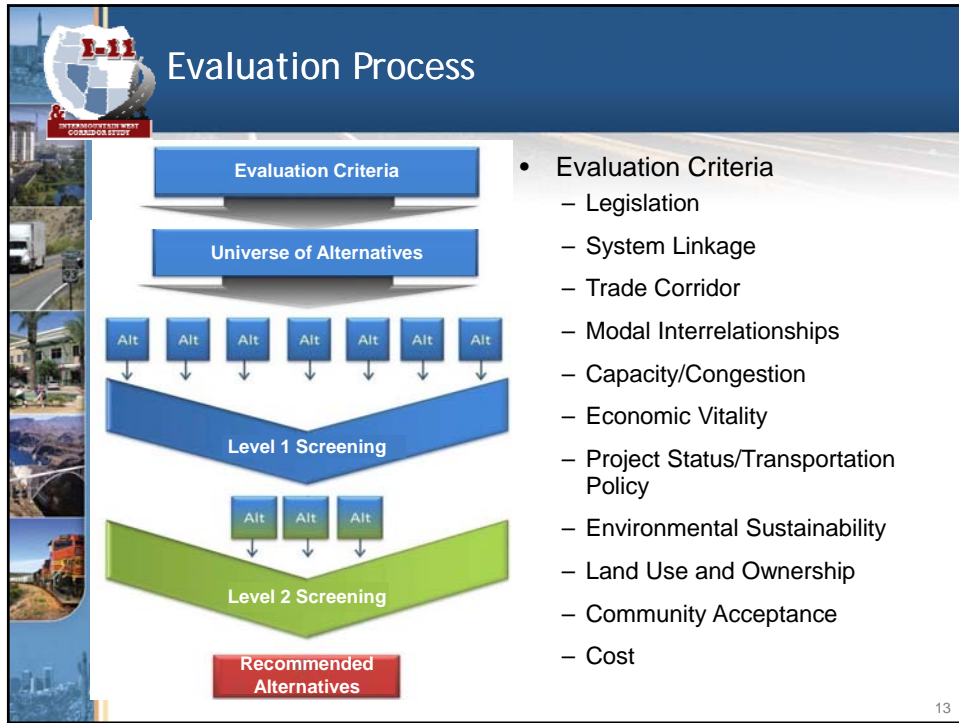
10

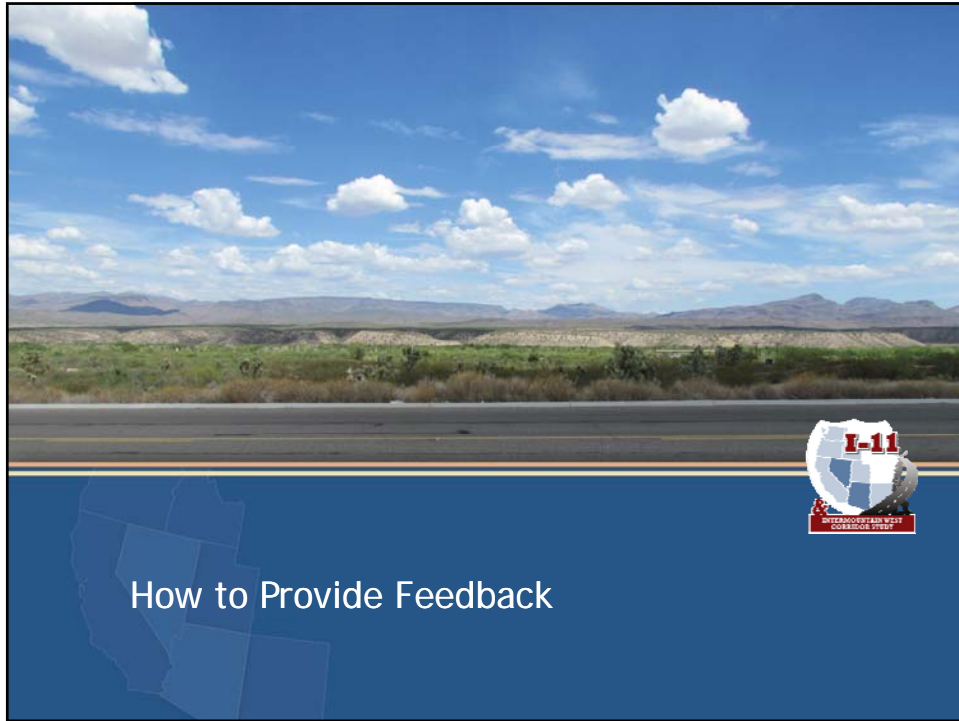


## Evaluation Process

- “Alternative” is a corridor containing one or more modes (e.g., highway, rail)
  - Alternatives could consist of a new or existing transportation facility, or a combination of both
- Alternatives were evaluated using criteria that was measured
  - Qualitatively in Level 1 for the full corridor
  - Mostly quantitatively in Level 2 for the Congressionally Designated Corridor

12





### How to Provide Feedback

- Learn more about the latest analysis completed by reviewing segment-specific presentation(s) and providing feedback using the online questionnaires.
- The questionnaires will be available online through February 28, 2014.
- Comments are always welcome throughout the study.

16





**Project Contacts:**

|   |   |
|---|---|
| <p><b>Sandra Rosenberg, PTP</b><br/>Nevada Department of Transportation<br/>1263 South Stewart Street<br/>Carson City, NV 89712<br/>srosenberg@dot.state.nv.us<br/>(775) 888-7241</p> | <p><b>Michael Kies, PE</b><br/>Arizona Department of Transportation<br/>206 S. 17th Avenue<br/>Phoenix, AZ 85007<br/>mkies@azdot.gov<br/>(602) 712-8140</p> |
|---|---|

